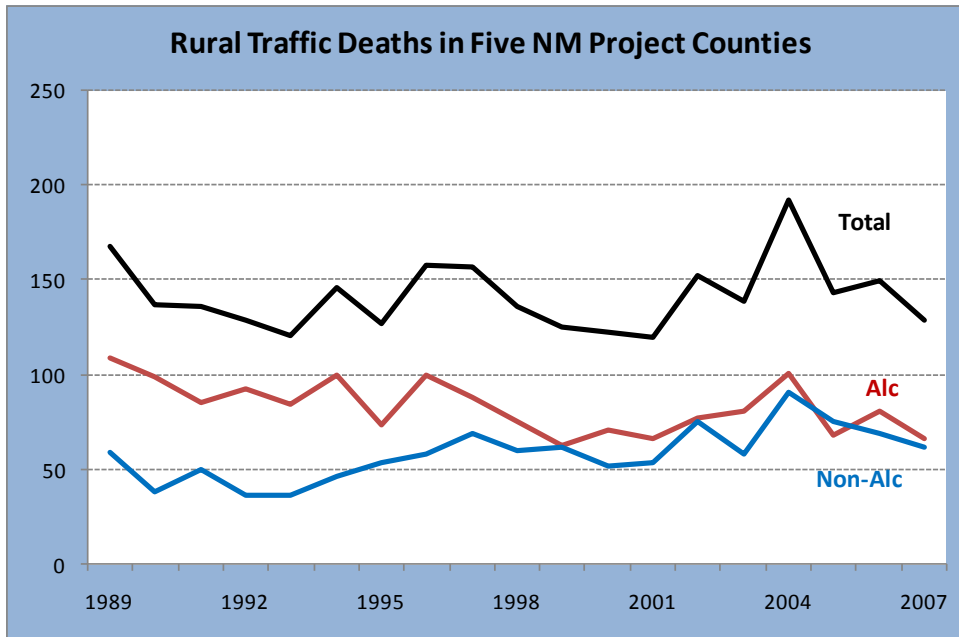


Five-County Project Trend Analysis With 2007 Data

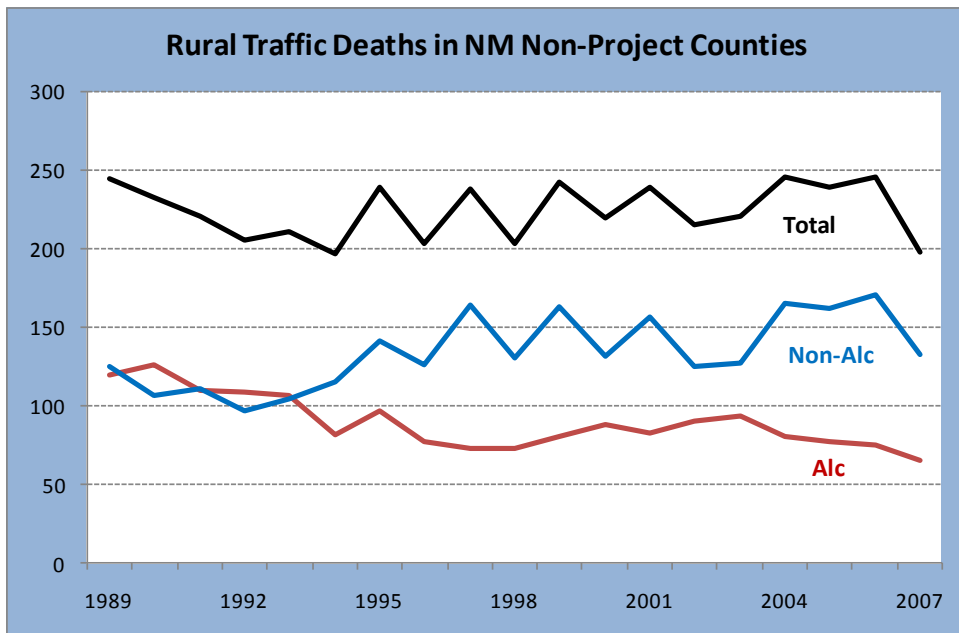
Steven Flint

DWI Resource Center, Feb. 17, 2008

Courtesy of the NM Traffic Safety Bureau and UNM Division of Government Research we just received preliminary New Mexico traffic death data for 2007 as of February 12, 2008. Based on that preliminary data, the following graph shows reported traffic deaths in the original five-county projects in “rural areas”, (defined for this analysis as excluding those reported by municipal police agencies).



This graph shows trends in “rural areas” of the remaining 28 NM counties, as a comparison:



Here are the counts used in the graphs.

Year	Projects Rural			NonProjects Rural			Total Rural		
	Alc	NAIc	Total	Alc	NAIc	Total	Alc	NAIc	Total
1989	109	59	168	120	125	245	229	184	413
1990	99	38	137	126	107	233	225	145	370
1991	86	50	136	110	111	221	196	161	357
1992	93	36	129	109	97	206	202	133	335
1993	85	36	121	106	105	211	191	141	332
1994	100	46	146	81	116	197	181	162	343
1995	74	53	127	97	142	239	171	195	366
1996	100	58	158	77	126	203	177	184	361
1997	88	69	157	73	165	238	161	234	395
1998	76	60	136	73	131	204	149	191	340
1999	63	62	125	80	163	243	143	225	368
2000	71	52	123	88	132	220	159	184	343
2001	67	53	120	82	157	239	149	210	359
2002	77	75	152	90	125	215	167	200	367
2003	81	58	139	93	128	221	174	186	360
2004	101	91	192	80	166	246	181	257	438
2005	68	75	143	77	162	239	145	237	382
2006	81	69	150	75	171	246	156	240	396
2007	67	62	129	65	133	198	132	195	327

There does not appear to be a lot of difference in the project counties between the alcohol and non-alcohol trends, and the alcohol trend does not appear to show a strongly different pattern from the comparison trend in alcohol in the non-project counties.