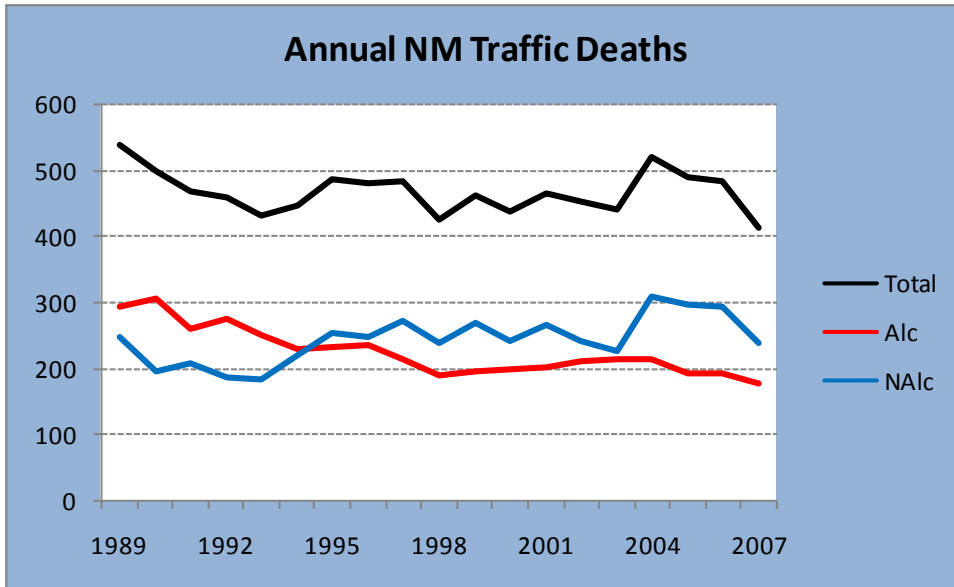


New Mexico Traffic Death Trends, in Graphs

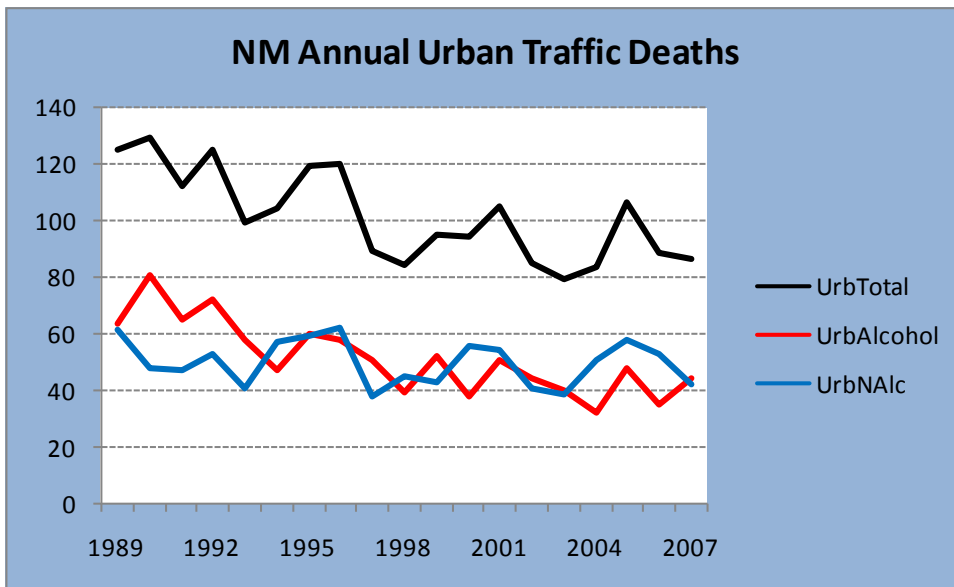
Steven Flint

DWI Resource Center, Fe. 18, 2008

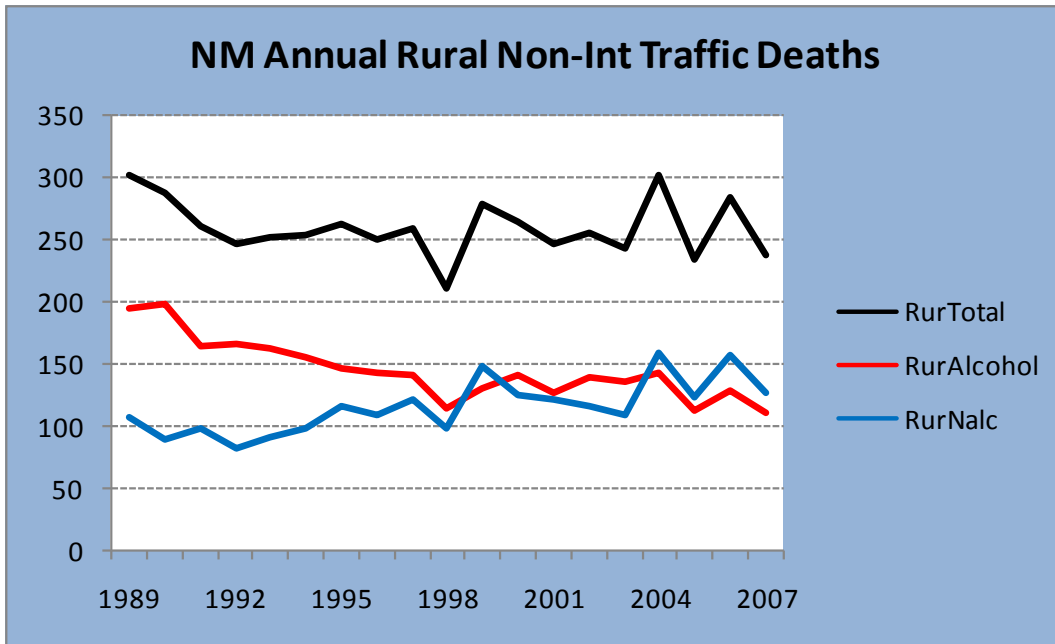
Drawing upon data from the NM Department of Transportation Traffic Safety Bureau showing preliminary reports of traffic deaths in 2007 as of February 12, 2008, as prepared by the UNM Division of Government Research, the following graphs show trends in New Mexico crash deaths. This first graph shows annual total deaths by alcohol involvement, showing a decline in non-alcohol deaths only relative to recent highs, and a slight drop in alcohol-related crash deaths only relative to recent slight increases:



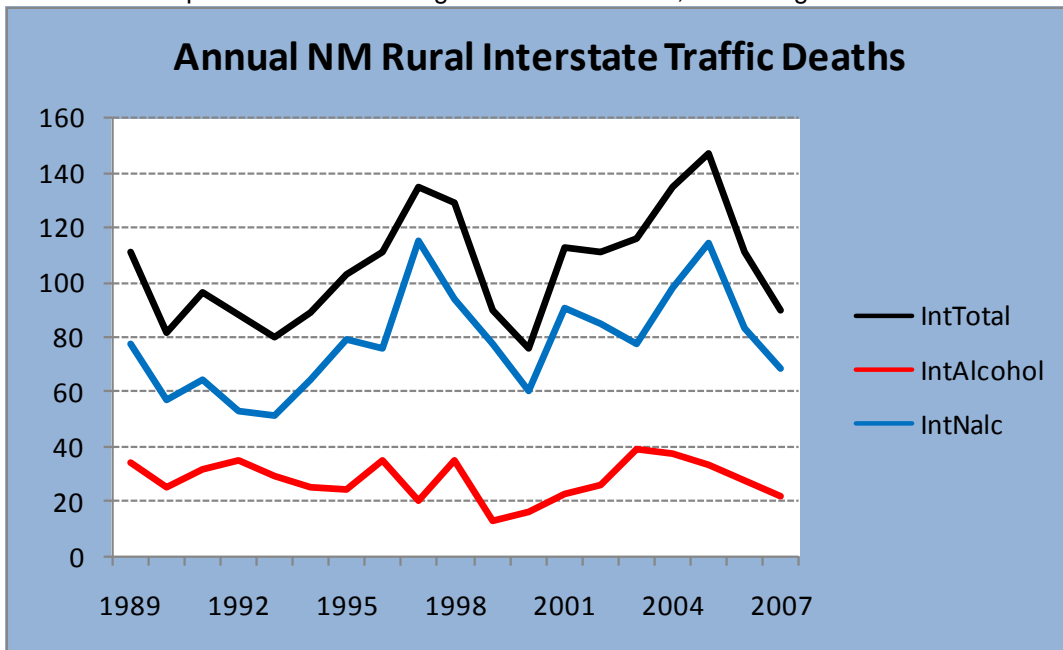
This graph shows the urban traffic deaths only, again showing a drop in non-alcohol urban deaths only relative to recent higher values, and a generally level trend in alcohol-related urban crash deaths.



For rural-noninterstate NM traffic deaths, we see a general level trend with a downtrend in recent years relative to prior higher values, but a long-term level trend:



For rural interstate NM traffic deaths, the small numbers make the annual variation appear more dramatic, but again we see a drop relative to recent higher values for 2007, but a long-term level trend:



These graphs show trends by alcohol involvement by quarter of the year. In the January-March Quarters, 2007 showed a drop in alcohol-related crash deaths to a level slightly below its previous record, but a recent upward trend in non-alcohol deaths. For April-June, we see non-alcohol deaths on a high plateau, and alcohol-related deaths showing no change. For July-September, alcohol-related deaths are returning to their former lower value after several years at slightly elevated levels. For October-December, we see alcohol-related crash deaths on a somewhat elevated plateau, and non-alcohol-related deaths returning to traditional levels after recent high levels.

